

BRECON

Vibration Technology

Licence **BOSCH**

General Catalog





BRECON Vibration Technology

General Catalog

External vibrators for the conveying industry

External vibrators 3000/3600 1/min
External vibrators 1500/1800 1/min
External vibrators 1000/1200 1/min
External vibrators 750/900 1/min
External vibrators 600/720 1/min
External vibrators 500/600 1/min
Accessories

I

External vibrators for concrete compaction

External vibrators 3000/3600 1/min
External vibrators 6000 1/min
External vibrators 9000 1/min
External vibrators 12000 1/min
Accessories

II

Electrical control systems for external vibrators

Vario-E frequency converters (permanent installation)
Frequency converters (mobile)
Frequency converters (electro-mechanical)
Distribution boxes
Accessories

III

Internal vibrators and accessories

Internal vibrators (high frequency)
Mobile frequency converter (electro-mechanical)
Mobile frequency converters (electronic)
Flexible shaft vibrators

IV

Special vibrators

Direct current vibrators
Tampers
V-external vibrators

V



External vibrators

for the conveying industry

External vibrators 3000/3600 1/min • Centrifugal force 0,4 - 92 kN	I - 2
External vibrators 1500/1800 1/min • Centrifugal force 1,0 - 127 kN	I - 3
External vibrators 1000/1200 1/min • Centrifugal force 6,0 - 256 kN	I - 4
External vibrators 750/900 1min • Centrifugal force 7,5 - 212 kN	I - 5
External vibrators 600/720 1/min • Centrifugal force 2,0 - 10 kN External vibrators 500/600 1/min • Centrifugal force 1,4 - 7 kN	I - 6
Accessories • Special bearing grease	I - 7

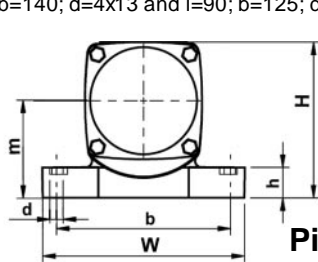
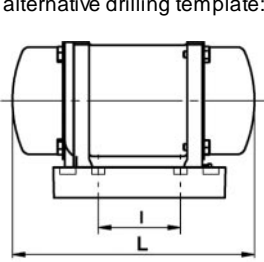


3000/3600 1/min
230 / 400V, 50Hz, 3~
265 / 460V, 60Hz, 3~
IP 65

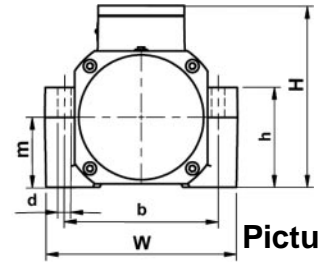
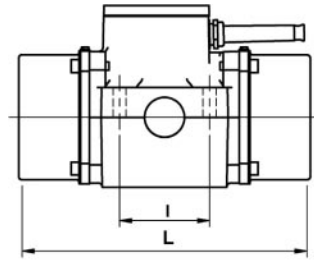
Dimensions and weight

Type	Part number	Centrifugal force [kN]	Working moment [kgcm]	Mains frequency [Hz]	Power input [kW]	Rated current [A]*	L x W x H [mm]	h	l	b	d	m	Weight [Kg]	Picture
18 131	18 131 102	0.4	0.8	50	0.07	0,15	172 x 72 x 80	10	45	45	4xM6	42	3	F***
	18 131 115	0.4	0.6	60	0.07	0,15	172 x 72 x 80	10	45	45	4xM6	42	3	
18 100 ¹⁾	18 100 202	1.2	2.4	50	0.15	0,27	198 x 165 x 125	25	115	135	4x10.5	78	5	A
	18 100 214	1.5	2.0	60	0.15	0,27	198 x 165 x 125	25	115	135	4x10.5	78	5	
18 132 ²⁾	18 132 202	**2.6	5.4	50	0.15	0,27	235 x 165 x 125	25	115	135	4x10.5	78	5	A
	18 132 214	**2.6	3.8	60	0.15	0,27	235 x 165 x 125	25	115	135	4x10.5	78	5	
18 117	18 117 202	3.0	6.0	50	0.30	0,64	260 x 160 x 165	90	90	125	4x13	60	10	B
	18 117 214	3.0	4.2	60	0.30	0,64	260 x 160 x 165	90	90	125	4x13	60	10	
18 118	18 118 202	5.0	10.0	50	0.34	0,67	300 x 160 x 165	90	90	125	4x13	60	10	B
	18 118 214	5.0	7.0	60	0.34	0,70	300 x 160 x 165	90	90	125	4x13	60	10	
18 134	18 134 102	7.0	14.0	50	0.52	1,00	295 x 190 x 185	100	90	154	4x13	70	16	B
	18 134 114	7.0	9.7	60	0.52	1,10	295 x 190 x 185	100	90	154	4x13	70	16	
18 135	18 135 102	9.0	18.0	50	0.63	1,15	325 x 190 x 185	100	90	154	4x13	70	17	B
	18 135 114	9.0	12.0	60	0.63	1,30	325 x 190 x 185	100	90	154	4x13	70	17	
18 120	18 120 102	14.0	28.0	50	1.00	1,85	350 x 250 x 220	125	100	200	4x17	90	30	B
	18 120 114	14.0	19.5	60	1.00	1,90	350 x 250 x 220	125	100	200	4x17	90	30	
18 123	18 123 102	18.0	36.0	50	1.30	2,40	370 x 250 x 220	125	100	200	4x17	90	34	B
	18 123 114	18.0	25.0	60	1.30	2,50	370 x 250 x 220	125	100	200	4x17	90	33	
18 126	18 126 202	28.0	56.0	50	2.20	4,00	490 x 330 x 340	175	140	248	4x22	175	93	B
	18 126 214	27.0	37.3	60	2.20	4,00	490 x 330 x 340	175	140	248	4x22	175	93	

* rated current at 400V (50Hz) / 460V (60Hz); **for short-time operation only; ***picture F see page I-7
 1) alternative drilling template: l=65; b= 140; d=4x13
 3) alternative drilling template: l=65; b=140; d=4x13 and l=90; b=125; d=4x13

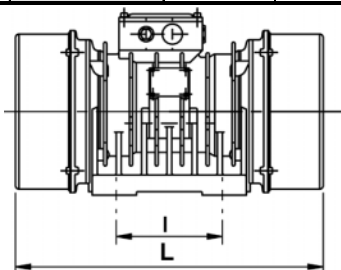


Picture A

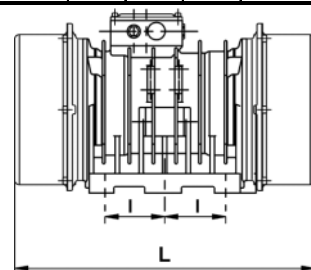
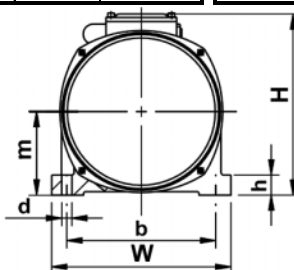


Picture B

18 150	18 150 101	40.0	81.0	50	4.00	6.30	578 x 330 x 340	40	155	255	4x25	150	107	C
	18 150 113	47.0	67.0	60	4.20	6.00	578 x 330 x 340	40	155	255	4x25	150	106	
18 156	18 156 101	55.0	110.0	50	5.50	8.60	622 x 356 x 365	40	180	280	4x26	166	153	C
	18 156 113	54.0	77.0	60	5.80	7.90	622 x 356 x 365	40	180	280	4x26	166	151	
18 164	18 164 101	67.0	136.0	50	7.00	11.20	664 x 390 x 395	42	100	320	6x28	192	179	D
	18 164 113	64.0	90.0	60	7.30	10.20	664 x 390 x 395	42	100	320	6x28	192	175	
18 168	18 168 101	76.0	155.0	50	8.40	13.50	694 x 390 x 427	45	100	320	6x28	203	225	D
	18 168 113	78.0	110.0	60	8.60	12.00	694 x 390 x 427	45	100	320	6x28	203	222	
18 172	18 172 101	94.0	190.0	50	9.00	14.80	719 x 390 x 427	45	100	320	6x28	203	247	D
	18 172 113	92.0	129.0	60	9.50	13.50	719 x 390 x 427	45	100	320	6x28	203	243	



Picture C



Picture D



1500/1800 1/min
230 / 400V, 50Hz, 3~
265 / 460V, 60Hz, 3~
IP 65

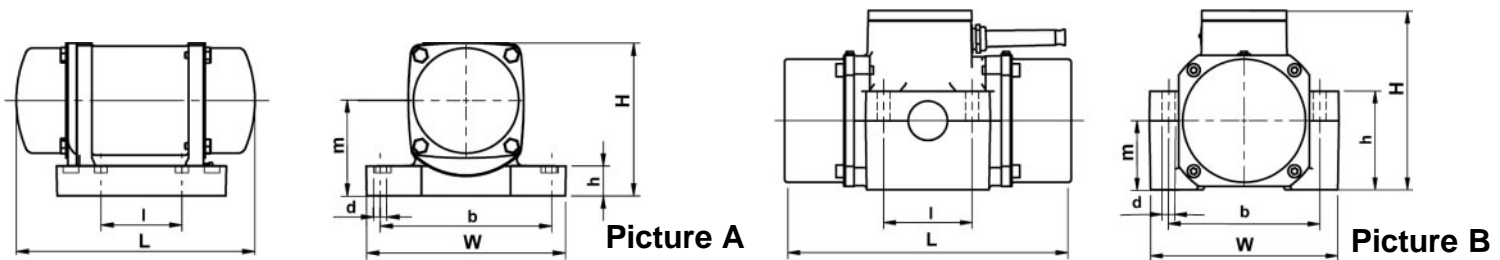
Dimensions and weight

Type	Part number	Centrifugal force [kN]	Working moment [kgcm]	Mains frequency [Hz]	Power input [kW]	Rated current [A]*
18 133 ¹⁾	18 133 202	1.0	8.0	50	0.15	0,32
	18 133 214	1.0	5.5	60	0.15	0,32
18 119	18 119 202	3.0	24.0	50	0.25	0,52
	18 119 214	3.0	16.6	60	0.25	0,55
18 136	18 136 001**	6.0	48.0	50	0.40	0,78
	18 136 013**	6.0	33.0	60	0.40	0,85

L x W x H [mm]	h	l	b	d	m	Weight [Kg]	Picture
270 x 165 x 125	25	115	135	4x10.5	78	7	A
270 x 165 x 125	25	115	135	4x10.5	78	6	A
270 x 160 x 180	100	90	125	4x13	80	14	B
270 x 160 x 180	100	90	125	4x13	80	13	B
300 x 220 x 225	140	90	154	4x13	110	25	B
300 x 220 x 225	140	90	254	4x13	110	25	B

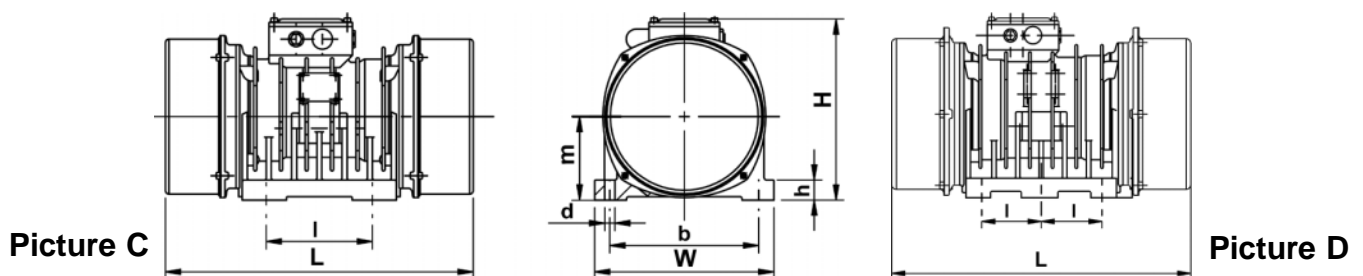
*rated current at 400V (50Hz) / 460V (60Hz); **vibrators with 4m vibration-proof cable;

1) alternative drilling template: l=65; b=140; d=4x13.0



18 121	18 121 701	11,0	89,8	50	0,80	1,30
	18 121 723	11,0	61,6	60	1,10	1,30
18 124	18 124 701	16.6	134.0	50	1.00	1.70
	18 124 713	17.7	100.0	60	1.13	1.60
18 127	18 127 701	22.3	180.0	50	1.30	2.10
	18 127 713	21.0	118.0	60	1.36	2.10
18 129	18 129 701	28.6	232.0	50	1.75	3.20
	18 129 713	30.5	172.0	60	1.85	3.20
18 151	18 151 101	39.0	314.0	50	2.20	3.80
	18 151 113	41.0	232.0	60	2.60	3.90
18 157	18 157 101	52.0	421.0	50	3.20	5.80
	18 157 113	55.0	311.0	60	3.50	5.60
18 165	18 165 101	57.0	460.0	50	4.50	7.40
	18 165 113	61.0	346.0	60	5.00	7.00
18 169	18 169 101	69.0	559.0	50	6.10	10.00
	18 169 113	70.0	392.0	60	6.20	9.60
18 173	18 173 101	83.0	676.0	50	7.10	11.90
	18 173 113	84.0	473.0	60	7.30	11.00
18 176	18 176 101	94.0	762.0	50	7.80	12.40
	18 176 113	95.0	535.0	60	8.40	12.00
18 179	18 179 101	121.0	984.0	50	10.70	17.60
	18 179 113	127.0	716.0	60	11.10	17.00

440 x 225 x 235	200	120	180	4x17	135	37	C
440 x 225 x 235	200	120	180	4x17	135	33	C
473 x 250 x 247	25	150	190	4x17	135	57	C
473 x 250 x 247	25	150	190	4x17	135	53	C
519 x 270 x 253	30	160	200	4x17	175	68	C
519 x 270 x 253	30	160	200	4x17	175	60	C
558 x 280 x 275	35	165	230	4x22	175	90	C
558 x 280 x 275	35	165	230	4x22	175	83	C
578 x 330 x 340	40	155	255	4x25	150	127	C
578 x 330 x 340	40	155	255	4x25	150	119	C
622 x 356 x 365	40	180	280	4x26	166	166	C
622 x 356 x 365	40	180	280	4x26	166	161	C
664 x 390 x 395	42	100	320	6x28	192	198	D
664 x 390 x 395	42	100	320	6x28	192	192	D
694 x 390 x 427	45	100	320	6x28	203	242	D
694 x 390 x 427	45	100	320	6x28	203	229	D
719 x 390 x 427	45	100	320	6x28	203	265	D
719 x 390 x 427	45	100	320	6x28	203	251	D
732 x 456 x 452	50	125	380	6x38	225	314	D
732 x 456 x 452	50	125	380	6x38	225	298	D
738 x 456 x 452	50	125	380	6x38	225	332	D
738 x 456 x 452	50	125	380	6x38	225	314	D





1000/1200 1/min

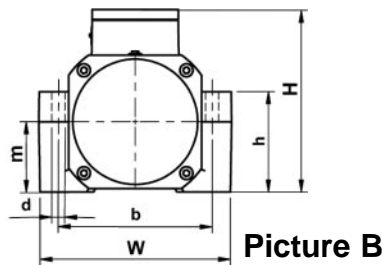
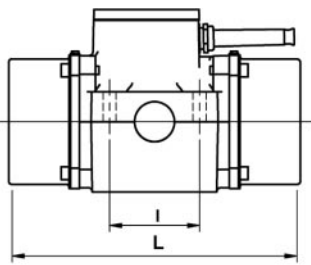
230 / 400V, 50Hz, 3~
265 / 460V, 60Hz, 3~

IP 65

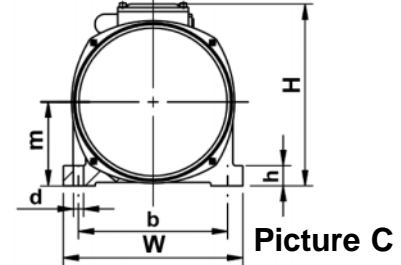
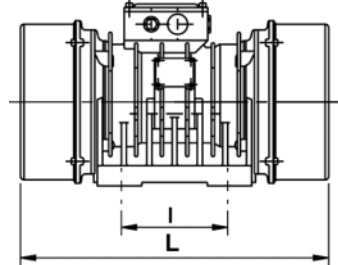
Dimensions and weight

Type	Part number	Centrifugal force [kN]	Working moment [kgcm]	Mains frequency [Hz]	Power input [kW]	Rated current [A]*	L x W x H [mm]	h	l	b	d	m	Weight [Kg]	Picture
18 137	18 137 001**	6.0	107	50	0.30	1.10	340 x 220 x 225	140	90	154	4x13	110	32	B
	18 137 713	7.1	90	60	0.65	1.50	464 x 233 x 235	20	120	180	4x17	110	38	C
18 122	18 122 001**	10.1	180	50	0.75	1.80	360 x 265 x 270	170	100	200	4x17	135	47	B
	18 122 713	10.1	135	60	0.75	1.70	509 x 250 x 247	20	150	190	4x17	135	56	C
18 125	18 125 001**	15.1	270	50	0.90	2.20	480 x 265 x 270	170	100	200	4x17	135	66	B
	18 125 713	14.2	180	60	0.90	1.60	583 x 270 x 253	30	160	200	4x17	135	69	C

* rated current at 400V (50Hz) / 460V (60Hz); **vibrators with 4m vibration-proof cable



Picture B



Picture C

18 128	18 128 701	19.3	352	50	1.30	2,40	630 x 280 x 275	35	165	230	4x22	175	101	C
	18 128 713	18.3	232	60	1.45	2,40	630 x 280 x 275	35	165	230	4x22	175	92	C
18 130	18 130 701	30.1	548	50	2.10	4,10	674 x 330 x 340	40	165	270	4x25	175	151	C
	18 130 713	33.6	425	60	2.28	4,00	674 x 330 x 340	40	165	270	4x25	175	138	C
18 158	18 158 101	39.0	710	50	2.70	5,80	706 x 356 x 365	40	180	280	4x26	166	189	C
	18 158 113	41.0	521	60	3.00	5,50	706 x 356 x 365	40	180	280	4x26	166	173	C
18 162	18 162 101	46.0	846	50	3.00	6,80	706 x 356 x 365	40	180	280	4x26	166	206	C
	18 162 113	46.0	589	60	3.30	6,20	706 x 356 x 365	40	180	280	4x26	166	185	C
18 166	18 166 101	56.0	1024	50	4.00	7,10	744 x 390 x 395	42	100	320	6x28	192	236	D
	18 166 113	58.0	737	60	4.20	6,80	744 x 390 x 395	42	100	320	6x28	192	216	D
18 170	18 170 101	66.0	1210	50	5.30	9,40	774 x 390 x 427	45	100	320	6x28	203	294	D
	18 170 113	65.0	829	60	6.20	10,10	774 x 390 x 427	45	100	320	6x28	203	266	D
18 174	18 174 101	87.0	1581	50	7.60	13,10	879 x 390 x 427	45	100	320	6x28	203	340	D
	18 174 113	88.0	1108	60	8.20	13,00	879 x 390 x 427	45	100	320	6x28	203	305	D
18 177	18 177 101	100.0	1827	50	8.00	13,40	906 x 456 x 452	50	130	380	6x32	225	385	D
	18 177 113	99.0	1251	60	8.60	13,80	906 x 456 x 452	50	130	380	6x32	225	348	D
18 180	18 180 101	125.0	2283	50	9.80	16,60	982 x 456 x 452	50	130	380	6x32	225	420	D
	18 180 113	119.0	1506	60	10.80	16,90	982 x 456 x 452	50	130	380	6x32	225	370	D
18 183	18 183 101	134.0	2438	50	10.20	17,10	982 x 456 x 452	50	130	380	6x32	225	432	D
	18 183 113	131.0	1662	60	11.00	17,50	982 x 456 x 452	50	130	380	6x32	225	383	D
18 185	18 185 101	151.0	2754	50	13.50	19,80	920 x 500 x 485	50	117	394	6x31	245	530	D
	18 185 113	154.0	1950	60	14.30	18,50	920 x 500 x 485	50	117	394	6x31	245	485	D
18 188	18 188 101	174.0	3166	50	15.20	24,00	1040 x 500 x 485	50	117	394	6x31	245	580	D
	18 188 113	170.0	2158	60	16.00	23,50	1040 x 500 x 485	50	117	394	6x31	245	522	D
18 190	18 190 101	206.0	3752	50	17.30	32,40	1120 x 620 x 610	55	140	520	8x45	265	905	E
	18 190 113	256.0	3241	60	18.00	31,40	1120 x 620 x 610	55	140	520	8x45	265	865	E

See next page for pictures D and E.



750/900 1/min

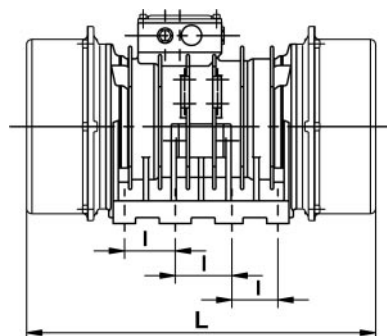
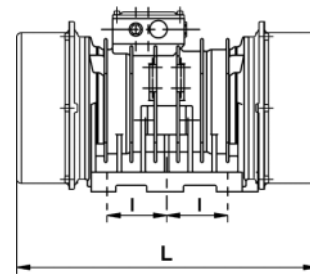
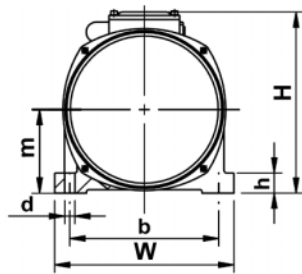
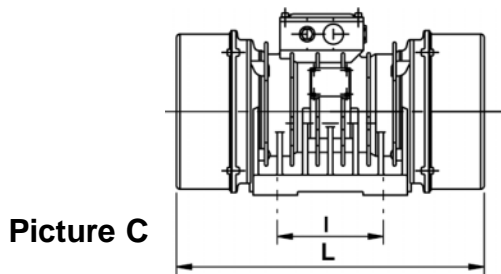
230 / 400V, 50Hz, 3~
265 / 460V, 60Hz, 3~

IP 65

Dimensions and weight

Type	Part number	Centrifugal force [kN]	Working moment [kgcm]	Mains frequency [Hz]	Power input [kW]	Rated current [A]*	L x W x H [mm]	h	l	b	d	m	Weight [Kg]	Picture
18 144	18 144 101	7.5	243	50	0.50	1,40	583 x 270 x 253	30	140	190	4x17	118	77	C
	18 144 113	10.8	243	60	0.60	1,60	583 x 270 x 253	30	140	190	4x17	118	77	
18 147	18 147 101	10.9	352	50	1.10	2,30	630 x 280 x 275	35	155	255	4x22	131	106	C
	18 147 113	15.7	352	60	1.20	2,30	630 x 280 x 275	35	155	255	4x22	131	106	
18 153	18 153 101	17.0	548	50	1.70	4,60	674 x 330 x 340	40	155	255	4x25	150	151	C
	18 153 113	24.0	548	60	1.90	4,30	674 x 330 x 340	40	155	255	4x25	150	151	
18 159	18 159 101	22.0	710	50	2.20	5,00	706 x 356x 365	40	180	280	4x26	166	189	C
	18 159 113	32.0	710	60	2.40	5,90	706 x 356x 365	40	180	280	4x26	166	189	
18 163	18 163 101	26.0	846	50	2.40	6,70	706 x 356x 365	40	180	280	4x26	166	206	C
	18 163 113	38.0	846	60	2.50	6,90	706 x 356x 365	40	180	280	4x26	166	206	
18 167	18 167 101	37.0	1215	50	3.00	8,00	824 x 390 x 395	42	100	280	6x28	192	257	D
	18 167 113	45.0	1024	60	3.50	8,00	824 x 390 x 395	42	100	280	6x28	192	243	
18 171	18 171 101	46.0	1495	50	5.20	10,00	854 x 390 x 427	45	100	320	4x28	203	300	D
	18 171 113	54.0	1210	60	5.80	10,30	854 x 390 x 427	45	100	320	4x28	203	280	
18 175	18 175 101	60.0	1960	50	6.20	11,90	959 x 390 x 427	45	100	320	4x28	203	373	D
	18 175 113	70.0	1581	60	7.20	11,60	959 x 390 x 427	45	100	320	4x28	203	345	
18 178	18 178 101	74.0	2402	50	7.00	13,10	976 x 456 x 452	50	130	320	6x32	225	430	D
	18 178 113	81.0	1827	60	8.00	12,60	976 x 456 x 452	50	130	320	6x32	225	392	
18 181	18 181 101	85.0	2749	50	7.30	13,90	982 x 456 x 452	50	130	380	6x32	225	450	D
	18 181 113	108.0	2438	60	8.50	13,30	982 x 456 x 452	50	130	380	6x32	225	430	
18 186	18 186 101	110.0	3559	50	8.80	20,90	1010 x 500 x 485	50	117	394	6x31	245	585	D
	18 186 113	140.0	3157	60	9.50	19,90	1010 x 500 x 485	50	117	394	6x31	245	560	
18 189	18 189 101	135.0	4376	50	11.00	22,70	1140 x 500 x 485	50	117	394	6x31	245	665	D
	18 189 113	176.0	3972	60	12.00	22,80	1010 x 500 x 485	50	117	394	6x31	245	640	
18 191	18 191 101	155.0	5028	50	13.10	27,80	1100 x 540 x 534	50	117	394	6x31	265	740	E
	18 191 113	189.0	4262	60	13.80	27,10	1010 x 500 x 485	50	117	394	6x31	265	695	
18 192	18 192 101	179.0	5794	50	14.00	29,70	1170 x 540 x 534	50	117	394	6x31	265	790	E
	18 192 113	212.0	4773	60	14.50	28,40	1010 x 500 x 485	50	117	394	6x31	265	730	

*rated current at 400V (50Hz) / 460V (60Hz)





600/720 1/min

230 / 400V, 50Hz, 3~
265 / 460V, 60Hz, 3~

IP 65

Dimensions and weight

Type	Part number	Centrifugal force [kN]	Working moment [kgcm]	Mains frequency [Hz]	Power input [kW]	Rated current [A]*	L x W x H [mm]	h	l	b	d	m	Weight [Kg]	Picture
18 139	18 139 101	2.0	103	50	0.32	0.80	464 x 225 x 235	20	120	180	4x17	105	40	C
	18 139 113	2.9	103	60	0.34	0.70	464 x 225 x 235	20	120	180	4x17	105	40	
18 142	18 142 101	3.4	170	50	0.40	0.90	509 x 250 x 247	25	150	190	4x17	112	51	C
	18 142 113	4.8	170	60	0.42	0.90	509 x 250 x 247	25	150	190	4x17	112	51	
18 145	18 145 101	4.8	243	50	0.48	1.20	583 x 270 x 253	30	160	200	4x17	118	77	C
	18 145 113	6.9	243	60	0.52	1.20	583 x 270 x 253	30	160	200	4x17	118	77	
18 148	18 148 101	7.0	352	50	0.67	1.60	630 x 280 x 275	35	165	230	4x22	131	106	C
	18 148 113	10.0	352	60	0.72	1.50	630 x 280 x 275	35	165	230	4x22	131	106	

* rated current at 400V (50Hz) / 460V (60Hz)

500/600 1/min

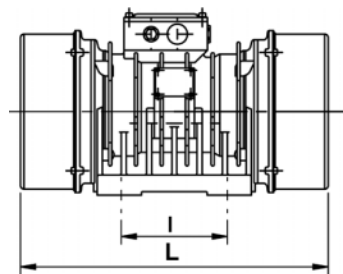
230 / 400V, 50Hz, 3~
265 / 460V, 60Hz, 3~

IP 65

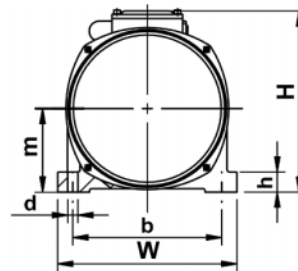
Dimensions and weight

Type	Part number	Centrifugal force [kN]	Working moment [kgcm]	Mains frequency [Hz]	Power input [kW]	Rated current [A]*	L x W x H [mm]	h	l	b	d	m	Weight [Kg]	Picture
18 140	18 140 101	1.4	103	50	0.30	0.80	464 x 225 x 235	20	120	180	4x17	105	40	C
	18 140 113	2.0	103	60	0.33	0.70	464 x 225 x 235	20	120	180	4x17	105	40	
18 143	18 143 101	2.3	170	50	0.38	0.90	509 x 250 x 247	25	150	190	4x17	112	51	C
	18 143 113	3.3	170	60	0.40	0.90	509 x 250 x 247	25	150	190	4x17	112	51	
18 146	18 146 101	3.3	243	50	0.45	1.10	583 x 270 x 253	30	160	200	4x17	118	77	C
	18 146 113	4.8	243	60	0.48	1.10	583 x 270 x 253	30	160	200	4x17	118	77	
18 149	18 149 101	4.8	352	50	0.64	1.40	630 x 280 x 275	35	165	230	4x22	131	106	C
	18 149 113	7.0	352	60	0.68	1.40	630 x 280 x 275	35	165	230	4x22	131	106	

* rated current at 400V (50Hz) / 460V (60Hz)



Picture C

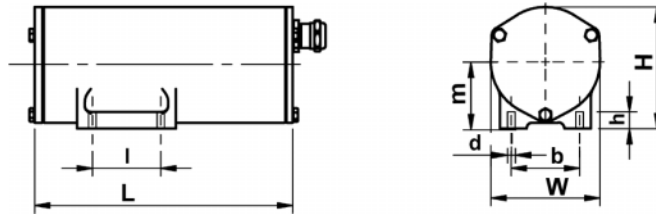




Special bearing grease for external vibrators

Part number	Quantity	Remarks
EW 560 / 23 14	0.25 kg tube	Special bearing grease (from -15°C to 100°C short-time 120°C)
EW 560 / 23 52	400 g cartridge	
EW 560 / 23 30	1 kg can	High-temperature bearing grease (up to 170°C)

Picture F





External vibrators

for concrete compaction

External vibrators 3000/3600 1/min

- Centrifugal force 0,4 - 92 kN

II - 2

External vibrators 6000 1/min

- Centrifugal force 8,0 - 20 kN

II - 3

External vibrators 9000 1/min

- Centrifugal force 10 - 18 kN

II - 4

External vibrators 12000 1/min

- Centrifugal force 10 - 18 kN

II - 4

Accessories

- Quick release clamps
- Special bearing grease

II - 5

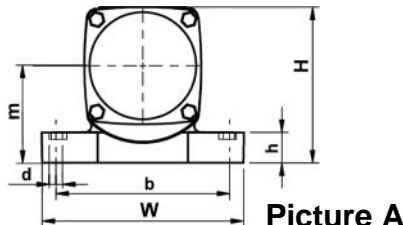
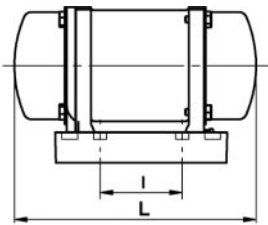


3000/3600 1/min 230 / 400V, 50Hz, 3~
265 / 460V, 60Hz, 3~ IP 65

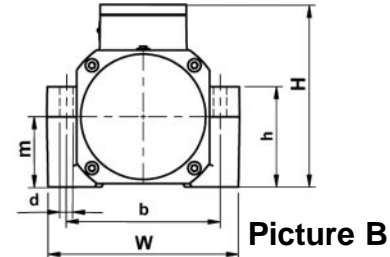
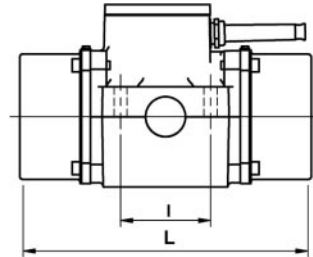
Dimensions and weight

Type	Part number	Centrifugal force [kN]	Working moment [kgcm]	Mains frequency [Hz]	Power input [kW]	Rated current [A]*	L x W x H [mm]	h	l	b	d	m	Weight [Kg]	Picture
18 131	18 131 102	0.4	0.8	50	0.07	0,15	172 x 72 x 80	10	45	45	4XM6	42	3	F***
	18 131 115	0.4	0.6	60	0.07	0,15	172 x 72 x 80	10	45	45	4XM6	42	3	
18 100 ¹⁾	18 100 202	1.2	2.4	50	0.15	0,27	198 x 165 x 125	25	115	135	4x10.5	78	5	A
	18 100 214	1.5	2.0	60	0.15	0,27	198 x 165 x 125	25	115	135	4x10.5	78	5	
18 132 ²⁾	18 132 202	**2.6	5.4	50	0.15	0,27	235 x 165 x 125	25	115	135	4x10.5	78	5	A
	18 132 214	**2.6	3.8	60	0.15	0,27	235 x 165 x 125	25	115	135	4x10.5	78	5	
18 117	18 117 202	3.0	6.0	50	0.30	0,64	260 x 160 x 165	90	90	125	4x13	60	10	B
	18 117 214	3.0	4.2	60	0.30	0,64	260 x 160 x 165	90	90	125	4x13	60	10	
18 118	18 118 202	5.0	10.0	50	0.34	0,67	300 x 160 x 165	90	90	125	4x13	60	10	B
	18 118 214	5.0	7.0	60	0.34	0,70	300 x 160 x 165	90	90	125	4x13	60	10	
18 134	18 134 102	7.0	14.0	50	0.52	1,00	295 x 190 x 185	100	90	154	4x13	70	16	B
	18 134 114	7.0	9.7	60	0.52	1,10	295 x 190 x 185	100	90	154	4x13	70	16	
18 135	18 135 102	9.0	18.0	50	0.63	1,15	325 x 190 x 185	100	90	154	4x13	70	17	B
	18 135 114	9.0	12.0	60	0.63	1,30	325 x 190 x 185	100	90	154	4x13	70	17	
18 120	18 120 102	14.0	28.0	50	1.00	1,85	350 x 250 x 220	125	100	200	4x17	90	30	B
	18 120 114	14.0	19.5	60	1.00	1,90	350 x 250 x 220	125	100	200	4x17	90	30	
18 123	18 123 102	18.0	36.0	50	1.30	2,40	370 x 250 x 220	125	100	200	4x17	90	34	B
	18 123 114	18.0	25.0	60	1.30	2,50	370 x 250 x 220	125	100	200	4x17	90	33	
18 126	18 126 102	28.0	56.0	50	2.20	4,00	490 x 330 x 340	175	140	248	4x22	175	93	B
	18 126 114	27.0	37.3	60	2.20	4,00	490 x 330 x 340	175	140	248	4x22	175	93	

* rated current at 400V (50Hz) / 460V (60Hz); **for short-time operation only; ***Picture F see page II-4
 1) alternative drilling template: l=65; b=140; d=4x13.0
 2) alternative drilling templates: l=65; b=140; d=4x13 and l=90; b=140; d=4x13

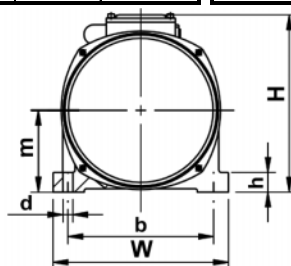
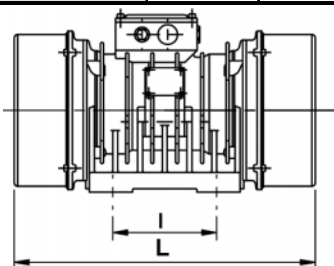


Picture A

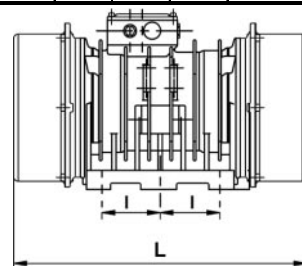


Picture B

18 150	18 150 101	40.0	81.0	50	4.00	6.30	578 x 330 x 340	40	155	255	4x25	150	107	C
	18 150 113	47.0	67.0	60	4.20	6.00	578 x 330 x 340	40	155	255	4x25	150	106	
18 156	18 156 101	55.0	110.0	50	5.50	8.60	622 x 356 x 365	40	180	280	4x26	166	153	C
	18 156 113	54.0	77.0	60	5.80	7.90	622 x 356 x 365	40	180	280	4x26	166	151	
18 164	18 164 101	67.0	136.0	50	7.00	11.20	664 x 390 x 395	42	100	320	6x28	192	179	D
	18 164 113	64.0	90.0	60	7.30	10.20	664 x 390 x 395	42	100	320	6x28	192	175	
18 168	18 168 101	76.0	155.0	50	8.40	13.50	694 x 390 x 427	45	100	320	6x28	203	225	D
	18 168 113	78.0	110.0	60	8.60	12.00	694 x 390 x 427	45	100	320	6x28	203	222	
18 172	18 172 101	94.0	190.0	50	9.00	14.80	719 x 390 x 427	45	100	320	6x28	203	247	D
	18 172 113	92.0	129.0	60	9.50	13.50	719 x 390 x 427	45	100	320	6x28	203	243	



Picture C



Picture D



6000 1/min

IP 65

Dimensions and weight

Type	Part number	Centrifugal force [kN]	Voltage [V]	Mains frequency [Hz]	Power input [kW]	Rated current [A]	L x W x H [mm]	h	l	b	d	m	Weight [Kg]	Picture
18 212	18 212 203	8.0	250	200	0.68	2.10	260 x 160 x 165	90	90	125	4x13	60	9	B
	18 212 209	8.0	42	200	0.68	12.60	260 x 160 x 165	90	90	125	4x13	60	9	
18 220	18 220 203	10.0	250	200	1.00	3.20	295 x 190 x 185	100	90	154	4x13	70	15	B
	18 220 209	10.0	42	200	1.00	19.00	295 x 190 x 185	100	90	154	4x13	70	15	
	18 220 207*	10.0	250	200	1.00	3.20	295 x 147 x 185	100	120	120	4x17	70	15	
18 221	18 221 203	12.0	250	200	1.20	3.60	295 x 190 x 185	100	90	154	4x13	70	15	B
	18 221 251*	12.0	250	200	1.20	3.60	295 x 147 x 185	100	65	125	4x13	70	15	
18 221	18 221 205	14.0	250	200	1.20	3.60	295 x 190 x 185	100	90	154	4x13	70	15	B
	18 221 209	14.0	42	200	1.20	21.50	295 x 190 x 185	100	90	154	4x13	70	15	
	18 221 210*	14.0	42	200	1.20	21.50	295 x 147 x 185	100	120	120	4x17	70	15	
	18 221 207*	14.0	250	200	1.20	3.60	295 x 147 x 185	100	120	120	4x17	70	15	
18 215	18 215 103	16.0	250	200	2.00	5.70	350 x 250 x 220	125	100	200	4x17	90	27	B
18 217	18 217 103	18.0	250	200	2.40	7.50	370 x 250 x 220	125	100	200	4x17	90	27	B
18 218	18 218 103	20.0	250	200	2.60	7.90	370 x 250 x 220	125	100	200	4x17	90	27	B

* Slim version

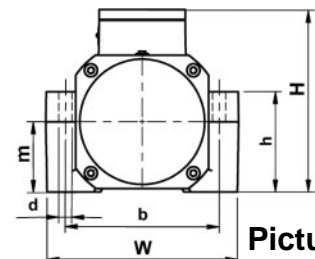
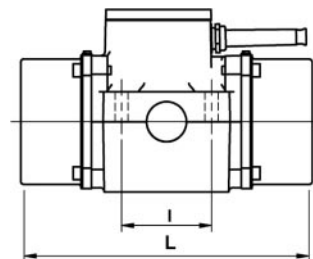
6000 1/min SL

IP 65

Dimensions and weight

Type	Part number	Centrifugal force [kN]	Voltage [V]	Mains frequency [Hz]	Power input [kW]	Rated current [A]	L x W x H [mm]	h	l	b	d	m	Weight [Kg]	Picture
18 221	18 221 351*	12.0	380	100	0.6	2.0	295 x 147 x 185	100	65	125	4x13	70	15	B
18 221	18 221 303	14.0	380	100	0.6	2.0	295 x 190 x 185	100	90	154	4x13	70	15	B

* Slim version



Picture B

Tilting table with BRECON LICENCE BOSCH external vibrators 18 220



9000 1/min (10,800 1/min)

IP 65

Dimensions and weight

Type	Part number	Centrifugal force [kN]	Voltage [V]	Mains frequency [Hz]	Power input [kW]	Rated current [A]	L x W x H [mm]	h	l	b	d	m	Weight [Kg]	Picture
18 219	18 219 112	10 (8)*	42	150	1.20	18.30	295 x 190 x 185	100	90	154	4x13	70	14	B
	18 219 215	10 (8)*	230	**180	1.20	4.30	295 x 190 x 185	100	90	154	4x13	70	16	
	18 219 501	14(12)*	250	150	1.20	5.25	295 x 190 x 185	100	90	154	4x13	70	15	
18 213	18 213 112	16 (13.5)*	42	150	1.80	28.00	350 x 250 x 220	125	100	200	4x17	90	25	B
18 216	18 216 015	18 (15)*	230	**180	2.80	8.10	370 x 250 x 220	125	100	200	4x17	90	26	B

* Values in parentheses are recommended for use of 8 hours or more

** 10,800 1/min

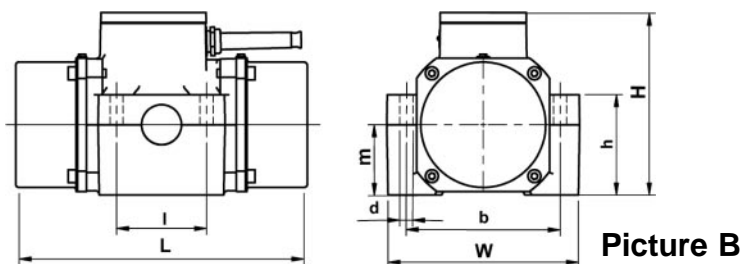
12000 1/min

IP 65

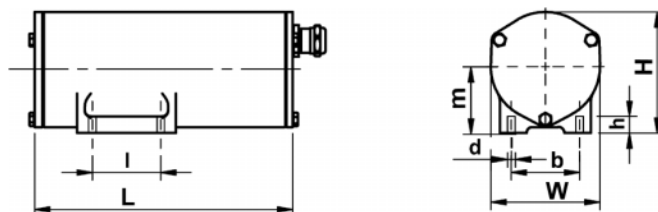
Dimensions and weight

Type	Part number	Centrifugal force [kN]	Voltage [V]	Mains frequency [Hz]	Power input [kW]	Rated current [A]	L x W x H [mm]	h	l	b	d	m	Weight [Kg]	Picture
18 219	18 219 203	10 (8.0)*	250	200	1.50	4.10	295 x 190 x 185	100	90	154	4x13	70	14	B
18 213	18 213 103	14 (12.5)*	250	200	2.40	6.50	350 x 250 x 220	125	100	200	4x17	90	26	B
18 216	18 216 103	18 (15)*	250	200	3.10	8.20	370 x 250 x 220	125	100	200	4x17	90	26	B

* Values in parentheses are recommended for use of 8 hours or more



Picture F

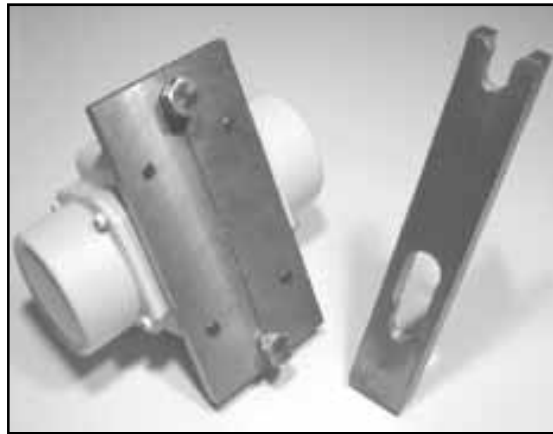




Quick release clamps

For external vibrators	Part number	
	upper section*	bottom section
Model: 18 212, 18 117, 18 118, 18 119	SLIM-95T	for welding: SLIM-95BW
18 219, 18 220, 18 221, 18 134, 18 135, 18 136, 18 137	SLIM-116T	for welding: SLIM-116BW
18 213, 18 214, 18 215, 18 216, 18 217, 18 218, 18 120, 18 121, 18 122, 18 123, 18 124, 18 125	SLIM-147T	for welding: SLIM-147BW

* complete with 2 locking screws and locking pin



Special bearing grease for external vibrators

Part number	Quantity	Remarks
EW 560 / 23 14	0.25 kg tube	Special bearing grease (from -15°C to 100°C short-time 120°C)
EW 560 / 23 52	400 g cartridge	
EW 560 / 23 30	1 kg can	High-temperature bearing grease (up to 170°C)



Grease gun

Part number	Remarks
EW 560 / 24 70	Pom-pom grease gun with hollow and pointed nozzles





Electrical control systems for external vibrators

Vario-E frequency converters (electronic)

- for frequencies up to 210 Hz

III - 2

Mobile frequency converters (electronic)

- for frequencies up to 210 Hz

III - 3

Frequency converters (electro-mechanical)

- 200 Hz

III - 4

Standard distribution boxes

- Standard distribution boxes, permanent installation

III - 5

Accessories

- Radio controls
- CEE plug connections for high frequencies
- Large display indicators for Vario frequency converters

III - 6



Vario-E frequency converters (electronic) for frequencies up to 210 Hz

Enclosure IP 54

Part numbers	Secondary				Primary		Weight [kg]	Dimensions H x W x D [mm]
	Power output with 250V / 200Hz [kVA]	Voltage at 200 Hz 3 ~ [V]	Continuous current [A]	Peak current (60 s) [A]	Voltage at 50/60 HZ 3~ [V]	Current [A]		
EW 578 / 4,0 E5	4.0	250	9.5	14.3	400	14.0	35	600 x 600 x 210
EW 578 / 5,5 E5	5.5	250	13.0	19.5	400	13.0	45	500 x 700 x 250
EW 578 / 7,5 E5	7.5	250	16.5	24.8	400	15.4	45	500 x 700 x 250
EW 578 / 11 E5	11.0	250	24.5	36.7	400	23.0	50	760 x 760 x 300
EW 578 / 14 E5	15.0	250	30.5	45.7	400	27.4	65	760 x 760 x 300
EW 578 / 18 E5	18.5	250	37.0	55.5	400	34.0	75	760 x 760 x 300
EW 578 / 20 E5	22.0	250	46.0	69.0	400	40.0	80	760 x 760 x 300
EW 578 / 28 E5	30.0	250	60.0	90.0	400	52.0	80	760 x 760 x 300
EW 578 / 34 E5	37.0	250	70.0	105.0	400	66.0	80	760 x 760 x 300

Frequency Converters with higher output power available on request

Electronically adjustable digital frequency converter, in modular design, high pulse frequency, sinusoidal output current digital frequency indicator for stepless frequency changing for HF external vibrators, automatic current limiting, short circuit proof, filtered ventilation, secondary motor choke, prepared to accommodate radio control, mounted in steel-sheet cabinet.





Mobile frequency converters (electronic) with integrated distribution panel

Enclosure IP 45

Part number	Vario-E-frequency converters					Distribution panel		Transport	Weight
	Secondary			Primary		Number of motor protection switches	Setting range [A]		
	Power output with 250V / 200Hz [kW]	Continuous current [A]	Peak current (60 s) [A]	Voltage at 50/60Hz 3~ [V]	Current [A]				
EW560/2937*	4.0	9.0	13.5	400	9.3	2 external toggle switch	2.5 - 4.0	handle bar	35
EW560/2877**	7.5	16.5	24.7	400	15.4	4 with function lights	2.5 - 4.0	trolley	48
EW560/2801**	11.0	24.5	36.7	400	23.0	7 with function lights	2.5 - 4.0	trolley	50
EW560/2833**	15.0	30.5	45.7	400	27.4	9 with function lights	2.5 - 4.0	trolley	52
EW560/2834**	18.5	37.0	55.5	400	34.0	11 with function lights	2.5 - 4.0	trolley	60

Electronically adjustable digital frequency converter, in modular design, high pulse frequency, sinusoidal output current

* Potentiometer for continuous frequency changing

** Digital frequency indicator for continuous frequency changing for HF external vibrators, automatic current limiting, short circuit proof, filtered ventilation, secondary motor choke, prepared to accommodate radio control, mounted in steel-cabinet





Frequency converters (electro-mechanical), 200Hz

Enclosure IP 54

Part number	Secondary			Primary			Weight [kg]
	Energy output cos $\varphi=0,8$	Voltage	Full load current	Energy input	Voltage at 50 HZ	Full load current	
	[kVA]	[V]	[A]	[kVA]	3~ [V]	[A]	
0 615 118 262	7.5 (9.5)*	250	17.3	11.0	400	16.8	78
0 615 119 262	11 (13.5)*	250	25.3	14.8	400	22.5	96
0 615 114 262	15 (19)*	250	34.6	17.0	400	25.7	166
0 615 116 262	20 (25)*	250	47.0	23.7	400	36.0	190
0 615 117 262	25 (30)*	250	58.0	30.6	400	46.5	230
0 615 115 262	30 (36)*	250	70.0	34.4	400	52.0	240

* Values in parentheses are valid for short-time operation





Standard distribution boxes, permanent installation

Enclosure IP 65

Part number	On / Off switch with motor protection*	Group switch	Weight [Kg]	Dimensions L x W x H [mm]	Remarks
SV 020004 SV 020104	2 2	0 1	9	380 x 380 x 210	Adjustment range of the motor protection switch: 2.5 - 4.0 A These motor protection switches are also available: 1.6 - 2.5 A 4.0 - 6.3 A 6.3 - 10.0 A 10.0 - 16.0 A Modular design, steel-sheet cabinet; motor protection switch with tommy switch; connection through large terminal strip
SV 030004 SV 030104	3 3	0 1	9	380 x 380 x 210	
SV 040004 SV 040104	4 4	0 1	10	380 x 380 x 210	
SV 050004 SV 050104	5 5	0 1	12	380 x 380 x 210	
SV 060004 SV 060104 SV 060204	6 6 6	0 1 2	13	380 x 380 x 210	
SV 070004 SV 070204	7 7	0 2	16	380 x 380 x 210	
SV 080004 SV 080204	8 8	0 2	17	380 x 380 x 210	
SV 090004 SV 090204 SV 090304	9 9 9	0 2 3	19	600 x 380 x 210	
SV 100004 SV 100204	10 10	0 2	19	600 x 380 x 210	
SV 110204 SV 110304	11 11	2 3	22	600 x 380 x 210	
SV 120004 SV 120204 SV 120304	12 12 12	0 2 3	23	600 x 380 x 210	

* Thermal and short circuit tripping of breakers

Distribution boxes with additional On / Off switches and group switch combinations are available.





Radio controls

Part number	Equipment	Remarks	Dimensions [mm]	Weight [Kg]
EW 560 / 1103	2 channels, 2 transmitters, 1 receiver	Transmitter frequency: 434 MHz Transmitter energy: 1×10^{-3} W Supply voltage: - transmitter: 9 V battery - receiver: 230V / 50Hz Output receiver: Potential-free relay contact per channel; breaking capacity 230V / 5A Coding: Coding pins plugged in	Transmitter: 115 x 60 x 20	0.15
EW 560 / 1104	3 channels, 2 transmitters, 1 receiver			
EW 560 / 1105	4 channels, 2 transmitters, 2 receivers		Receiver: 180 x 120 x 75	0.70
Inquire for part number	up to 8 channels			

CEE plug connections for frequencies of 100 - 300 Hz

DIN 49 462/63 and DIN 49 465

Part number	Voltage [V]	Load capacity [A]	Identification	Pictures (pictures show 250 V-versions)
1 614 482 048 1 614 482 049	250	16 32	HF plug 3P + 10h, green	
1 614 482 050 1 614 482 062	42	32 63	HF plug 3P 4h, green	
1 614 484 010 1 614 484 011	250	16 32	HF coupler socket 3P + 10h, green	
1 614 484 012 1 614 484 016	42	32 63	HF coupler socket 3P 4h, green	
1 614 485 024 1 614 485 025	250	16 32	HF wall socket 3P + 10h, green	
1 614 485 026 1 614 485 035	42	32 63	HF wall socket 3P 4h, green	
1 614 485 031 1 614 485 032	250	16 32	HF socket f. ext. mounting 3P + 10h, green	
1 614 485 033 1 614 485 034	42	32 63	HF socket f. ext. mounting 3P 4h, green	
1 614 482 056	250	32	HF attachment plug 3P + 10h, green	

More models available on request

Large display indicators for Vario frequency converters

Part number	Remark
EW 560 / 2188	1-field indicator, 3 characters, LED (red), non -reflective, adjustable display
EW 560 / 2189	2-field indicator, 3 characters, LED (red), non -reflective, adjustable display



Internal vibrators and accessories

Internal vibrators 200Hz, 42V or 250V

- Internal vibrators PROFI LINE
- Spade grip pokers PROFI LINE
- Spare heads for internal vibrators PROFI LINE

IV - 2

Mobile frequency converters (electro-mechanical)

- 42V or 250V output
- Power output 0,7 - 6,0 kVA

IV - 3

Mobile frequency converters (electronic)

- 42V or 250V output
- Power output 1,8 - 13,7 kVA

IV - 4

Flexible shaft vibrators and drive motors

- Flexible shaft vibrators 12000 vibration/min
- Drive motors for flexible shaft vibrators

IV - 5



Internal Vibrators PROFI LINE 200 Hz, 42V or 250V

Part number	Head diameter [mm]	Length [mm]	Rated current [A]	Voltage [V]	Power input [W]	Weight [Kg]
18 031 001	31	330	Miscellaneous types on request			
18 038 601*	38	310	4.0	42	270	10
18 038 603*	38	310	1.0	250	270	10
18 050 601*	50	360	10.0	42	600	15
18 050 603*	50	360	2.0	250	600	15
18 058 601*	58	370	14.0	42	830	16
18 058 603*	58	370	2.5	250	830	16
18 065 601*	65	380	18.0	42	1100	20
18 065 603*	65	380	3.0	250	1100	20
18 080 001	80	450	Miscellaneous types on request			

5m hose length, 15m power cable, CEE plug and switch

*Also available with Vulkollan cap on request at extra costs (please indicate when ordering)

ATTENTION: for comparison with other internal vibrator manufacturers, the indicated current is for the no-load condition (i.e. vibrator head hanging vertically and operating in free air). Under full-load conditions (i.e. vibrator head fully submersed in no-slump concrete), the current can be double the no-load current.

Spade Grip Pokers PROFI LINE 200 Hz, 42V

Part number	Diameter [mm]	Length [mm]	Rated current [A]	Voltage [V]	Power input [W]	Weight [Kg]
18 031 005	31	330	Miscellaneous types on request			
18 038 605	38	310	4.0	42	270	9
18 050 605	50	360	10.0	42	600	13
18 058 605	58	370	14.0	42	830	14
18 065 605	65	380	18.0	42	1100	18

1m hose length, 15m power cable, CEE plug and operating handle

Also available with Vulkollan cap on request at extra costs (please indicate when ordering)

ATTENTION: for comparison with other internal vibrator manufacturers, the indicated current is for the no-load condition (i.e. vibrator head hanging vertically and operating in free air). Under full-load conditions (i.e. vibrator head fully submersed in no-slump concrete), the current can be double the no-load current.

Spare Heads for Internal Vibrators PROFI LINE

Part number	Head diameter [mm]	Length [mm]	Rated current [A]	Voltage [V]	For Type part number	Weight [Kg]
18 031 051	31	330	Miscellaneous types on request			
18 038 651*	38	310	4.0	42	18 038 601 + 605	2
18 038 653*	38	310	1.0	250	18 038 603	2
18 050 651*	50	360	10.0	42	18 050 601 + 605	4
18 050 653*	50	360	2.0	250	18 050 603	4
18 058 651*	58	370	14.0	42	18 058 601 + 605	6
18 058 653*	58	370	2.5	250	18 058 603	6
18 065 651*	65	380	18.0	42	18 065 601 + 605	8
18 065 653*	65	380	3.0	250	18 065 603	8
18 080 051	80	450	Miscellaneous types on request			

*Also available with Vulkollan cap at extra costs (please indicate when ordering)

ATTENTION: for comparison with other internal vibrator manufacturers, the indicated current is for the no-load condition (i.e. vibrator head hanging vertically and operating in free air). Under full-load conditions (i.e. vibrator head fully submersed in no-slump concrete), the current can be double the no-load current.



Mobile frequency converters (electro-mechanical), 200Hz

Enclosure IP 44

Part number	Secondary				Primary			Weight [kg]
	Power output cos $\varphi=0.8$ [kVA]	Voltage [V]	Rated current [A]	Number of sockets	Voltage at 50 HZ [V]	Full load current [A]	Transport	
0 615 007 001 0 615 007 251	0.7	42 250	9.6 1.6	1	1~ 230V	4.0	handle bar	15
0 615 012 001 0 615 012 251	1.2	42 250	16.5 2.8	1	1~ 230V	6.5	handle bar	18
0 615 018 001 0 615 018 251	1.8	42 250	24.8 4.1	2	1~ 230V	9.0	handle bar	27
0 615 024 001 0 615 024 251	2.4	42 250	33.0 5.5	2	1~ 230V	11.0	slide	37
0 615 012 003 0 615 012 253	1.2	42 250	16.5 2.8	1	3~ 400V	2.6	handle bar	17
0 615 018 003 0 615 018 253	1.8	42 250	24.8 4.1	2	3~ 400V	3.6	handle bar	27
0 615 024 003 0 615 024 253	2.4	42 250	33.0 5.5	2	3~ 400V	4.5	slide	28
0 615 030 003 0 615 030 253	3.0	42 250	41.3 6.8	3	3~ 400V	6.0	slide	46
0 615 040 003 0 615 040 253	4.0	42 250	55.0 9.0	3	3~ 400V	8.0	slide	48
0 615 060 003 0 615 060 253	6.0	42 250	82.6 13.0	4	3~ 400V	10.8	trolley	87

1.5 m Power cable and plug. Also available are converters for other currents.

The converters have overload capacity and are overheat protected.

To determine the necessary size of the converter, add the power inputs (in kVA) of the HF vibrators that are to be run at the same time. Choose the converter that is rated for the next larger power output (in kVA).





Mobile frequency converters (electronic), 200Hz

Enclosure IP 45

Part number	Secondary				Primary			Weight [kg]
	Energy output cos φ= 0.8 [kVA]	Rated Voltage [V]	Rated current [A]	Number of sockets	Voltage at 50 HZ [V]	Full load current [A]	Transport	
EW578/1M58 EW578/1N58	1.5	42	30.0	1	1~ 230V	14	handle bar	27
		250	5.0					10
EW578/2M58 EW578/2N58	3.0	42	56.0	2	1~ 230V	16	handle bar	37
		250	10.0					11
EW578/2H58 EW578/2K58	5.5	42	56.0	2	3~ 400V	20	handle bar	39
		250	10.0					20
EW578/3H58 EW578/3K58	7.5	42	84.0	3	3~ 400V	26	handle bar	39
		250	15.0					24
EW578/4H58 EW578/4K58	11.0	42	112.0	4	3~ 400V	35	trolley	67
		250	20.0					24
EW578/3P58 EW578/3R58	5.5	42	84.0	3	3~ 230V	22	handle bar	38
		250	15.0					11

1.5 m Power cable and plug. Also available are converters for other currents.

The converters have overload capacity and are overheat protected.

To determine the necessary size of the converter, add the power inputs (in kVA) of the HF vibrators that are to be run at the same time. Choose the converter that is rated for the next larger power output (in kVA).



This picture shows a special equipment.



Flexible shaft vibrators 12000 1/min

Part number	Centrifugal force [kN]	Head diameter [mm]	Hose length [m]	Amplitude [mm]	Vibrations [1/min]	Weight [Kg]
18 028 910	2.0	28	1.0	0.9	12,000	2.8
18 028 915	2.0	28	1.5	0.9	12,000	2.5
18 028 920	2.0	28	2.0	0.9	12,000	2.2
18 028 925	2.0	28	2.5	0.9	12,000	2.3
18 028 930	2.0	28	3.0	0.9	12,000	2.4
18 028 935	2.0	28	3.5	0.9	12,000	2.5
18 038 910	3.5	38	1.0	1.1	12,000	3.5
18 038 915	3.5	38	1.5	1.1	12,000	3.6
18 038 920	3.5	38	2.0	1.1	12,000	3.7
18 038 925	3.5	38	2.5	1.1	12,000	3.8
18 038 930	3.5	38	3.0	1.1	12,000	3.9
18 038 935	3.5	38	3.5	1.1	12,000	4.0
18 045 910	3.8	45	1.0	1.6	12,000	3.7
18 045 915	3.8	45	1.5	1.6	12,000	3.8
18 045 920	3.8	45	2.0	1.6	12,000	3.9
18 045 925	3.8	45	2.5	1.6	12,000	4.0
18 045 930	3.8	45	3.0	1.6	12,000	4.1
18 045 935	3.8	45	3.5	1.6	12,000	4.2

Drive motors for flexible shaft vibrators

Part number	Power input [W]	Voltage [V]	Mains frequency [Hz]	Current [A]	Revolution [1/min]	Weight [Kg]
18 014 901	600	230	50	3	4000	3.6
18 014 913	600	115	60	6	4000	3.0

including handle bar, 10 m power cable and plug





Special vibrators

Direct current external vibrators 3680 1/min

- 12V
- 24V

V - 2

Tampers 3000/3600 1/min

- Accessories for tamping

V - 3

V-external vibrators and control units

V - 4



Direct current external vibrators (3680 1/min)

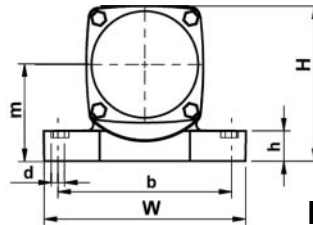
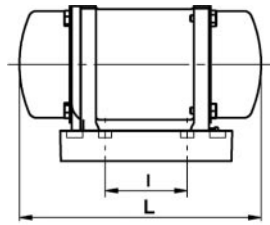
Dimensions and weight

IP 65

Type	Part number	Centrifugal force [kN]	Direct current [V]	Power input [kW]	Rated current [A]	L x W x H [mm]	h	l	b	d	m	Weight [kg]	Picture
18 961	18 961 302	1.4	12	0.15	12.60	198 x 165 x 125	25	115	135	4x10.5	80	6	A
	18 961 303	1.4	24	0.15	6.30	198 x 165 x 125	25	115	135	4x10.5	80	6	A
	18 961 304	2.2	12	0.17	13.80	198 x 165 x 125	25	115	135	4x10.5	80	6	A
	18 961 305	2.2	24	0.17	6.90	198 x 165 x 125	25	115	135	4x10.5	80	6	A
	18 961 306	1.6	12	0.16	13.20	198 x 165 x 125	25	115	135	4x10.5	80	6	A
	18 961 307	1.8	24	0.16	6.60	198 x 165 x 125	25	115	135	4x10.5	80	6	A

with 2.5m power cable

1) alternative drilling template: l=65; b=140; d=4x13.0



Picture A





Low frequency tampers 3000/3600 1/min

IP 65

Dimensions and weight

Type	Part number	Centrifugal force [kN]	Rated voltage range [V]	Mains frequency [Hz]	Power input [kW]	Rated current [A]	Dimensions and weight		Remarks
							L x W x H [mm]	Weight [kg]	
18 902	18 902 201	1.4	220-260 / 380-440 (3~)	50	0.15	0.47 0.27	238 x 430 x 183	12	- incl. 4m power cable without plug - supplied without accessories
	18 902 213	1.4	220-265 / 380-460 (3~)	60	0.15	0.47 0.27	238 x 430 x 183	12	
	18 902 250	1.4	65 / 110 (3~)	50	0.15	1.60 0.94	238 x 430 x 183	11	
	18 902 502	1.4	65 / 115 (3~)	60	0.15	1.60 0.94	238 x 430 x 183	12	



Accessories for tamping

Type	Part number	Total length [mm]	Foot print [mm]	Shank dimensions		Weight [Kg]	Picture
				Length [mm]	diameter [mm]		
1 618 603	1 618 603 301	560	round Ø 72	100	35	2	1
	1 618 603 302	560	100 x 80	100	35	2	2
	1 618 603 303	560	150 x 150	100	35	3	3
	1 618 603 304	560	200 x 35	100	35	2	4

Picture 1



Picture 3



Picture 2



Picture 4





V-Vibrators with control feature

380 / 400 V
50 Hz ; 3 ~ IP 55

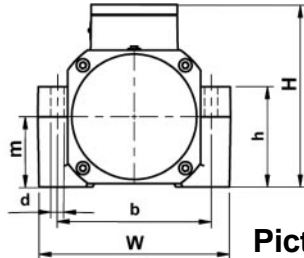
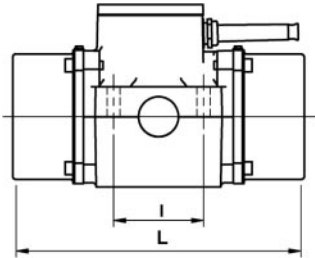
Dimensions and weight

Type	Part number	Centrifugal force [kN]		Working moment [kgcm]	Power input [kW]	Rated current [A]
		max. at 1450 1/min	min. at 950 1/min			
18 404 V1	18 404 001	4.0	0.4	32 - 8.5	0.25 / 0.34	0.52
18 405 V2	18 405 001	7.0	1.0	56 - 22	0.40 / 0.51	0.78
18 406 V3	18 406 001	13.0	2.6	104 - 52	0.85 / 1.22	1.85
18 407 V4	18 407 001	20.0	4.5	169 - 83	1.10 / 1.58	2.40

L x W x H [mm]	h	l	b	d	m	Weight [kg]	Picture
370 x 160 x 180	100	90	125	13	75	15	B (1)
380 x 220 x 225	140	90	154	13	110	28	B (2)
460 x 265 x 270	170	100	200	17	135	50	B (3)
540 x 265 x 270	170	100	200	17	135	61	B (4)

The external vibrators are supplied with 4m vibration-proof power cable without plug
When mounted in pairs suitable for vibration devices from:

- (1) 65 - 190 kg
- (2) 150 - 350 kg
- (3) 270 - 550 kg
- (4) 430 - 900 kg



Picture B



Control Units for V-Vibrators (electronic), 400V, 50/60Hz

Part number	Max. output current [A]	For nominal output up to... [kW]	Output frequency [Hz]	Connection of:	Enclosure	Weight [kg]	Dimensions H x W x D [mm]	Remarks
EW 560 / 2299	3.9	1.5	0 - 50	2 x V1 or 2 x V2	IP 65	38	600 x 600 x 210	mounted in steel-sheet cabinet
EW 560 / 2297	5.5	2.2	0 - 50	2 x V3 or 2 x V4	IP 65	38	600 x 600 x 210	mounted in steel-sheet cabinet



BRECON
Vibration Technology

BRECON Vibrationstechnik GmbH
Postfach 45 01 69
D-50876 Köln
Telefon +49 (0) 221 9 54 42 70
Telefax +49 (0) 221 9 54 42 77